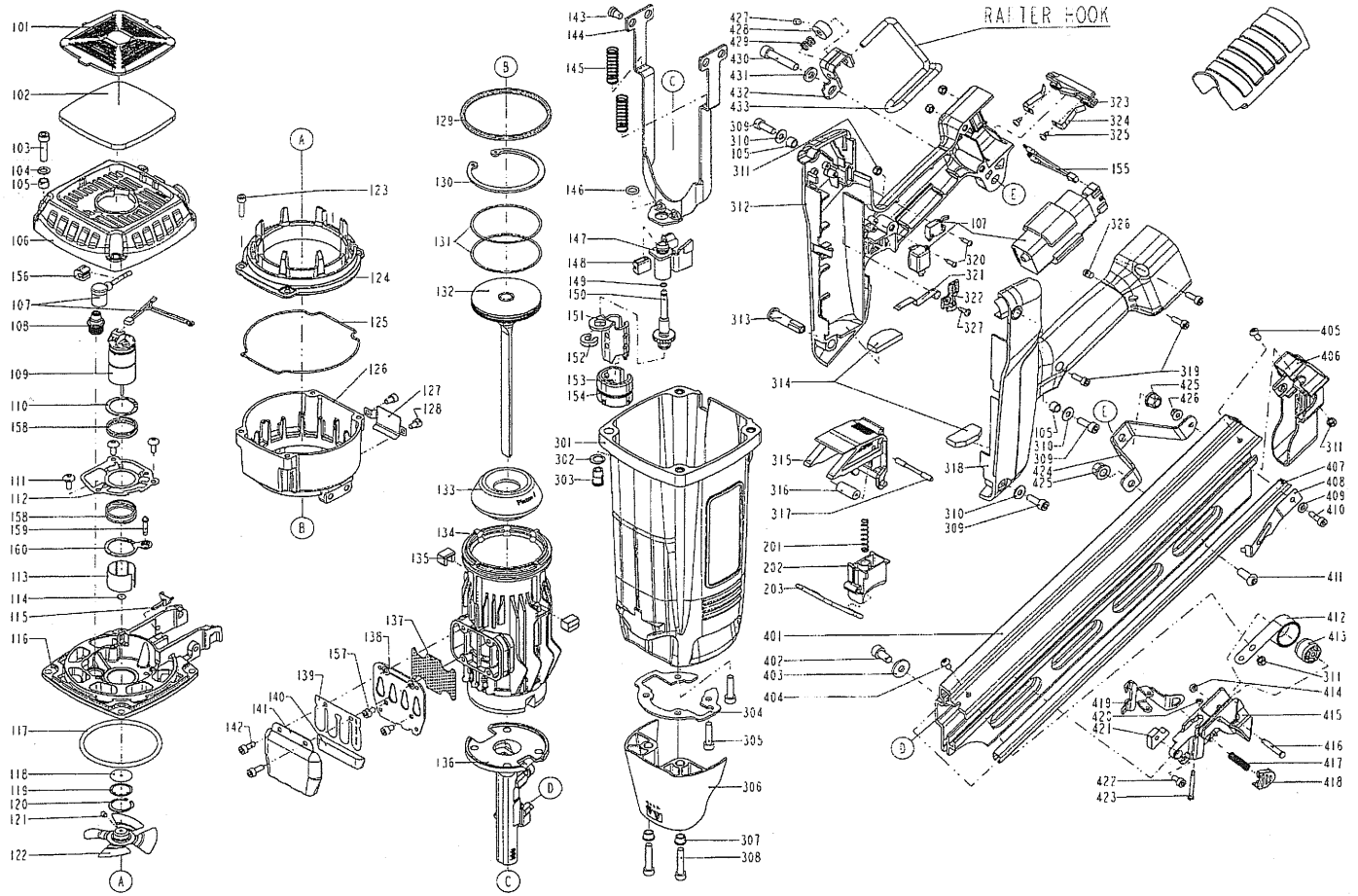


DIAGRAM OF ND90 WOODY



ITEM NO.	PART NO.	DESCRIPTION	ITEM NO.	PART NO.	DESCRIPTION	ITEM NO.	PART NO.	DESCRIPTION
101	11371-1154702-1	DEFLECTOR	142	2040101-02040-5	HEX.SOC.HD.BOLT	320	2040108-01010-0	SELF TAPPING BOLT
102	1137N-1150001-1	FILTER	143	113BW-1154701-1	HEX.SOC.HD.BOLT	321	113AH-1150001-1	MOTOR FAN SWITCH LEVER
103	2040101-03110-0	HEX.SOC.HD.BOLT	144	11330-1154701-1	SAFETY C	322	11323-1154703-1	BRACKET-MOTOR FAN SWITCH LEVER
104	2040201-03050-0	FLAT WASHER	145	11337-1154701-1	SAFETY SPRING	323	1136H-1154701-1	BATTERY NODE BRACKET
105	1136P-1154701-1	COLLOR	146	2041108-01100-0	O - RING	324	113A8-1150001-1	BATTERY NODE
106	11369-1155101-1	CAP	147	11332-1154701-2	SAFETY B	325	2040107-01040-0	TAP BOLT
107	1120G-1150001-3	PCB ASSEMBLY	148	1134W-1154703-1	FEED BUMPER	326	113AP-1150001-1	LED COVER
108	1120D-1154701-1	SPARKLER	149	2040309-00010-0	SELF-LOCKING EXTERNAL NUTS	327	2040108-01020-5	SELF TAPPING BOLT
109	1120N-1150006-1	MOTOR UNIT	150	11249-1154702-1	ADJUST AXIE UNIT	401	11389-1154701-1	MAGAZINE A
110	2040304-53010-0	EX-CONCENTRIC RING	151	11331-1154703-1	SAFETY A	402	2040101-04020-2	HEX.SOC.HD.BOLT
111	2040102-02043-5	HALF ROUND HD.HEX.BOLT	152	1131C-1154703-1	RING	403	2040202-04010-0	FLAT WASHER
112	1131J-1154702-1	POSITIONING SHEET	153	11339-1154703-1	PROTECTIVE CASING	404	2040102-02010-0	HALF ROUND HD.HEX.BOLT
113	11398-1150002-1	SLEEVE MOTOR	154	1131G-1154704-1	FIXED RING	405	2040102-02040-0	HALF ROUND HD.HEX.BOLT
114	11380-1150001-1	WASHER-MOTOR SHAFT	155	113CA-1150801-1	SOURCE	406	11390-1154701-2	PROTECTING HOOD COVER
115	113A6-1151101-1	FUEL STEM ADAPTER	156	1136H-1154705-1	RAFT HOOK BRACKET	407	11396-0644707-1	STEEL CHANNEL
116	1139U-1150001-2	END CAP-COMBUSTION CHAMBER	157	2040101-02030-5	HEX.SOC.HD.BOLT	408	11385-0644703-1	STOP NAI PLATE
117	2041104-06070-0	O - RING	158	1138J-1150002-1	SPRING	409	11380-1154701-1	GASKET
118	1136X-1150001-1	SEAL	159	113CK-1150001-1	POSITIONING SHAFT	410	2040101-02070-0	HEX.SOC.HD.BOLT
119	11323-1150003-1	SEAL PLATE-MOTOR	160	1131C-1154704-1	RING A	411	2040102-04030-0	HALF ROUND HD.HEX.BOLT
120	2040303-35010-0	IN-CONCENTRIC RING	201	11319-1154701-0	SPRING	412	11372-0830001-1	SPRING
121	2040104-02010-5	HEX.SOC.HD.SCREW	202	11316-1154701-1	TRIGGER	413	11386-0370002-1	ROLLING ELEMENT
122	1120C-1150001-2	COOLING FAN ASSEMBLY	203	11335-1150001-1	SAFETY	414	1135H-0790001-1	PU RETAINER
123	2040101-02080-4	HEX.SOC.HD.BOLT	301	11230-115A303-1	GUN BODY UNIT	415	1136E-1154701-2	PROTECTING HOOD COVER
124	113AE-1150001-1	UPPER COMBUSTION CHAMBER	302	11380-1154702-1	WASHER CAP	416	11385-0644701-1	ROLL PIN
125	1132M-1150901-1	PACKING	303	11398-1150001-1	CAP NUT	417	1136F-0644701-1	SPRING
126	1139V-1150001-1	COMBUSTION CHAMBER	304	11323-1154702-1	CONNECTOR PLATE-NOSE/CYLINDER	418	1138B-0644701-1	GLOVE
127	1139B-1150001-2	WASHER	305	2040101-03090-2	HEX.SOC.HD.BOLT	419	11363-0644705-2	PUSHER
128	2040101-02020-2	HEX.SOC.HD.BOLT	306	1134R-1154702-1	SPRING COVER	420	1131D-0460001-1	URETHANE RETAINER
129	2041104-07061-0	O-RING	307	11398-1154702-1	WASHER-NOSE COVER	421	1136G-0834701-1	SQUARE UNITS
130	2040300-14010-0	C - RING	308	2040101-03110-2	HEX.SOC.HD.BOLT	422	2040101-02030-0	HEX.SOC.HD.BOLT
131	11350-1154701-1	PISTON RING	309	2040101-03070-2	HEX.SOC.HD.BOLT	423	11318-0084701-1	TRIGGER PIVOT PIN
132	11204-1154701-2	DRIVER UNIT	310	2040201-03040-0	FLAT WASHER	424	11323-1154701-1	POSITIONING SHEET
133	11327-1154701-1	BUMPER	311	2040500-02010-0	LOCK NUT	425	2040501-04010-0	BOLT CAP
134	11320-1150003-1	CYLINDER	312	1137K-1154703-1	HANDLE A	426	2040501-02020-0	BOLT CAP
135	1134W-1154704-1	BUMPER-COMBUSTION CHAMBER	313	11325-1154701-1	HANDLE BOLT	427	2040104-03080-2	HEX.SOC.HD.SCREW
136	11382-1154701-2	NOSE PIECE	314	1138W-1150001-1	SPACER	428	1136C-1154701-1	POSITIONING AXIS
137	1139W-1150001-2	EXHAUST MESH PLATE	315	113A7-1154701-1	FUEL ACTUATOR	429	1138L-1154701-1	SPRING RETAINER
138	113A0-1150001-1	EXHAUST BAFFLE	316	11398-1154701-1	BUSH-FUEL ACTUATOR	430	2040101-04110-0	HEX.SOC.HD.BOLT
139	1139X-1150001-2	REED VALVE	317	11325-1154702-1	PIN-FUEL ACTUATOR	431	2040201-04010-1	FLAT WASHER
140	1139L-1150001-1	CLEANER	318	1137K-1154702-2	HANDLE B	432	1136H-1154702-1	RAFT HOOK BRACKET
141	113A3-1150001-1	DEFLECTOR	319	2040101-02060-0	HEX.SOC.HD.BOLT	433	1133D-1154702-1	HOOK